

THE
FROEBEL PREPARATORY
SCHOOL

*Printed in England by
Langley & Sons, Ltd.
The Euston Press, N.W.1*

FROEBEL EDUCATIONAL INSTITUTE
COLET GARDENS
LONDON, W. 14

PROSPECTUS

THE FROEBEL PREPARATORY SCHOOL

45 COLET GARDENS
LONDON, W. 14

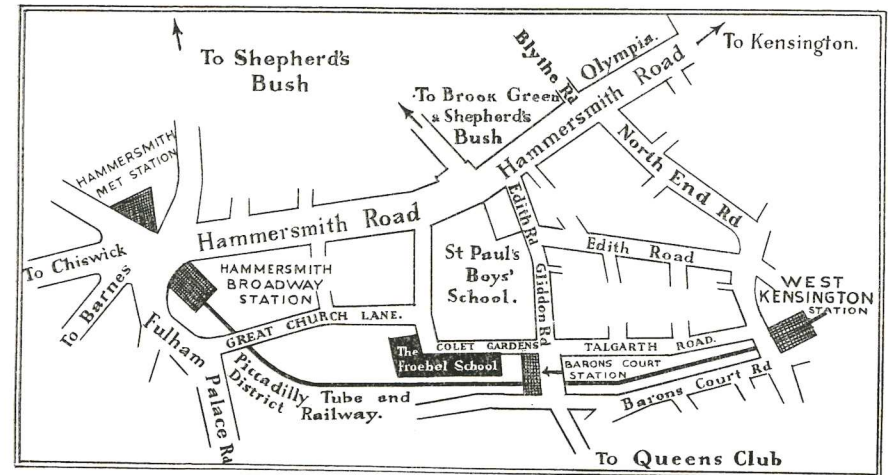
Telephone No. : RIVERSIDE 1496

The Froebel Institute was founded in 1892 for the training of teachers and the education of children. It began its work in 1894 and was incorporated as a "Company not for Gain" under Licence of the Board of Trade in 1900.

College for Teachers: Grove House, Roehampton Lane, S.W.15.

Demonstration Schools: The Froebel Preparatory School, Colet Gardens, W. 14.

Grove House School, Roehampton Lane, S.W. 15.



SKETCH MAP SHOWING POSITION OF SCHOOL.

The School stands at the back of St. Paul's School, West Kensington.

Stations: Baron's Court, 2 minutes; Hammersmith, 12 minutes; West Kensington, 8 minutes; Addison Road, 15 minutes.

Omnibuses: 73, 173, 33, 9, 27, 28 and 26 ply along the Hammersmith Road and the North End Road, which are close to the School.

Next Term begins on.....

GOVERNING BODY

Chairman : C. G. MONTEFIORE, Esq., D.D., D.Litt.

Hon. Treasurer : MICHAEL HORNBY, Esq.

PROFESSOR C. L. BOULENGER, M.A., D.Sc.

MISS M. AELDRIN CULLIS, O.B.E., M.A. (Resident Tutor, Bedford College).

MISS HELEN DARBISHIRE, M.A. (Principal of Somerville College).

A. F. B. FFORDE, Esq., B.A.

MRS. ALAN GARDINER.

MRS. R. HOLLAND-MARTIN.

SIR HENRY MCAULIFFE, F.C.A.

MRS. W. H. OGSTON (N.F.U. Certificate).

MISS MARY G. OSTLE (N.F.U. Teachers Certificate & Trainer's Diploma ; late Secretary of the Froebel Society).

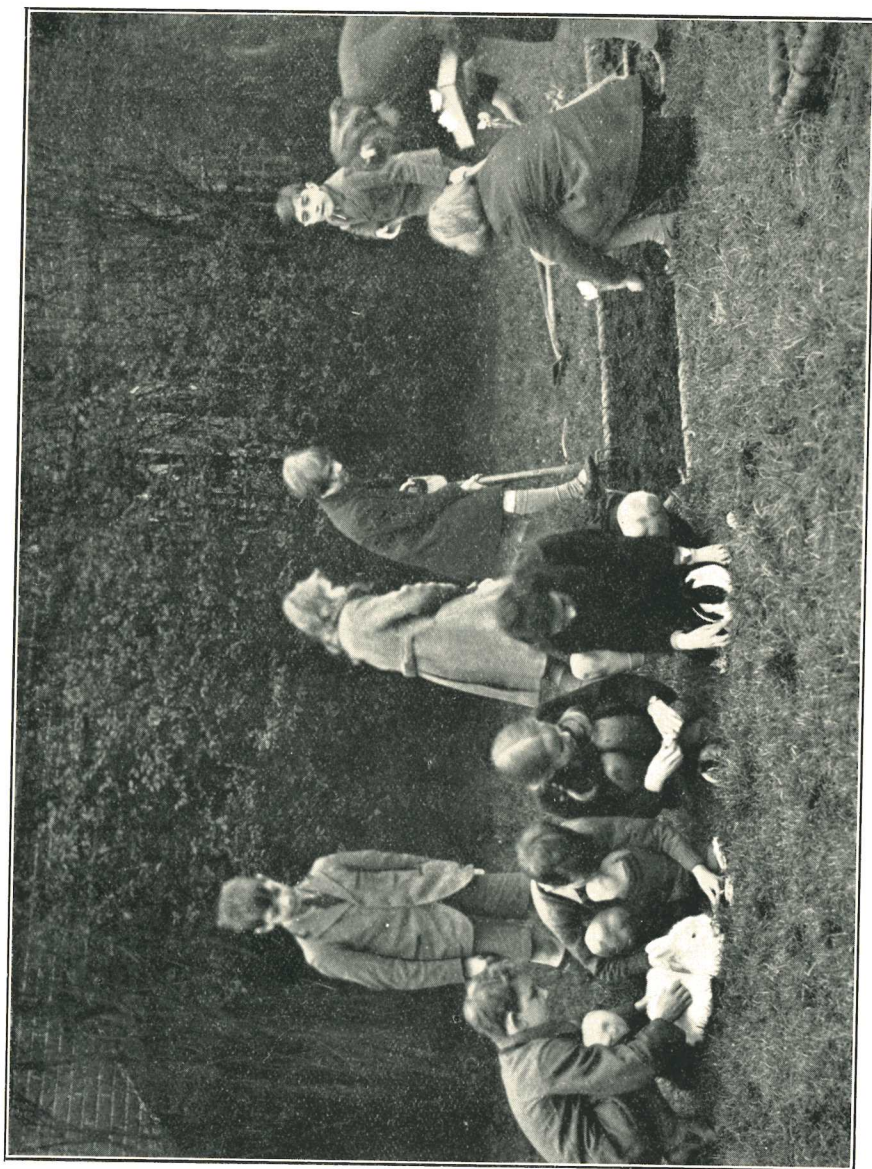
MISS A. E. WARK, C.B.E. (formerly Chief Woman Inspector, Board of Education).

MISS ALICE WOODS, M.A. (late Principal of the Maria Grey Training College).

Principal : Miss E. M. JEBB, M.A. Oxon.

Headmistress : Miss O. B. PRIESTMAN, B.A., N.F.U.

Accountant Secretary : Miss M. B. HOBBS, B.A.



WINTER WORK IN THE GARDEN

Aims of the School.

The School provides a sound, well-balanced education on progressive lines for boys and girls up to 13 or 14 years of age, when they are ready to pass into public or secondary schools. It seeks to develop initiative and thoughtfulness, and the ability to work and play with zest. An atmosphere of friendly co-operation between the staff and pupils helps the children to realise themselves as responsible members of the School Community.

Stages of Education.

THE NURSERY CLASS AND KINDERGARTEN, which take children from 2-6 years, are housed in a part of the building which can be easily isolated, in case of infection, from the Senior School. The classes are open from 9.20 a.m. to 4 p.m. In their large, bright rooms and in the garden the children have the space and fresh air that are necessary for healthy growth. They have the companionship of others of their own age and opportunity to develop personality and self-control in free and organised play. The mid-day meal is planned on sound dietetic principles and is followed by sleep or rest on beds. The regularity and the rhythm of the day help to give the children poise in their physical and mental life. They learn to deal with many different kinds of materials, gaining alertness of mind and useful experience, in addition to manual skill. There are no formal lessons in the Nursery but very important work is done in this class, for here the children are laying the foundations of those habits and relationships which will help them to become happy and useful members of society. In the Upper and Lower Kindergarten many of the Nursery occupations are carried on with growing skill and the children are also taught reading, number work and writing, which now become subjects of interest to them. Imaginative effort is fostered, and more time is given to appreciation of music, literature and artistic work. The children gradually learn to regard themselves as members of a class and to take pleasure in working with others.

The TRANSITION CLASS forms a bridge between the Kindergarten and school.



THE NURSERY CLASS

In THE SCHOOL the ordinary subjects of the curriculum are taught, so that the Public School standard is reached at the age of twelve to fourteen years. Since the school seeks to encourage a variety of interests and to develop in each child a balanced personality, stress is also laid on handwork, music and physical training.

Games. Nursery children spend the greater part of the day out of doors in fine weather and care is taken that all children have time for exercise in the fresh air during each day, weather permitting. Twice a week during the winter terms the older boys are taken by private bus to play football in the grounds of the College at Roehampton. The girls play netball on the school courts. In the summer term boys and girls from Form II upwards are taken to Roehampton for cricket and rounders.

Staff The Staff consists of experienced and fully qualified teachers. They have the advantage of frequent consultation with the Lecturers at the Training College, therefore, in planning courses of study they are able to keep in touch with the best modern ideas on subject matter and methods of education.

Health. Health is of vital importance to the child's school life, and parents are asked to co-operate with the school in keeping certain rules with the object of achieving the highest possible standard of fitness. Children should keep to regular and reasonable bed-time hours. They should not go to parties or cinemas during the week, in term time. They should be kept at home at the first onset of the common cold, as prompt treatment saves time for the patient and prevents the spread of infection.

A health certificate stating that the child has not been in contact with anyone suffering from a contagious or infectious disease must be signed by a Parent or Guardian and presented on the first day of each term. If a child has been absent on account of infectious disease, or has been in contact with infectious disease, a special health certificate, signed by



THE LIBRARY

a Medical Practitioner, stating that there is no risk of infection, must be furnished before the child is allowed to return to School. After any absence whatever a note of explanation from a Parent or Guardian should be brought to the Headmistress.

Milk and biscuits are provided by the School at 11 a.m., without extra charge but any parents who prefer to send their children with fresh fruit for mid-morning lunch may do so. Mid-day dinner is provided for all children who wish to take it. Menus may be seen by parents on application to the Headmistress. Children who have dinner at school rest afterwards before going into the playground.

Dress.

Children in the Nursery, Kindergarten and Transition Forms wear overalls. All those who stay to dinner, except Nursery children, should bring a rug for rest time. Every child should keep at school a pair of light leather house shoes, goloshes, an extra pair of socks or stockings and a comb. Children in the Transition Form and in the School need rubber-soled gym shoes. School Uniform is required in all classes from Form I upwards.

Every article of clothing, shoes, etc., must be clearly marked with the child's name. School uniform and overalls are supplied by Daniel Neal, of Kensington (list on application).

Attendance. The school terms average 12 weeks. There is a whole holiday on Saturday, and children in the Kindergarten, Transition and Form I have a half holiday on Wednesday. There is no afternoon School for any child on the first day of the term.

Morning school begins at 9.20 and ends at 12, 12.30, 12.40, according to class.

Afternoon school begins at 2.5 or 2.15 and ends at 3.50 or 4 p.m., according to class.



POTTERY AND CLAY MODELLING

Admission. Applications for admission must be made to the Headmistress, who will supply all information and the requisite forms. She is at home to parents on Wednesdays during the Term and every afternoon for a week before the beginning of each term.

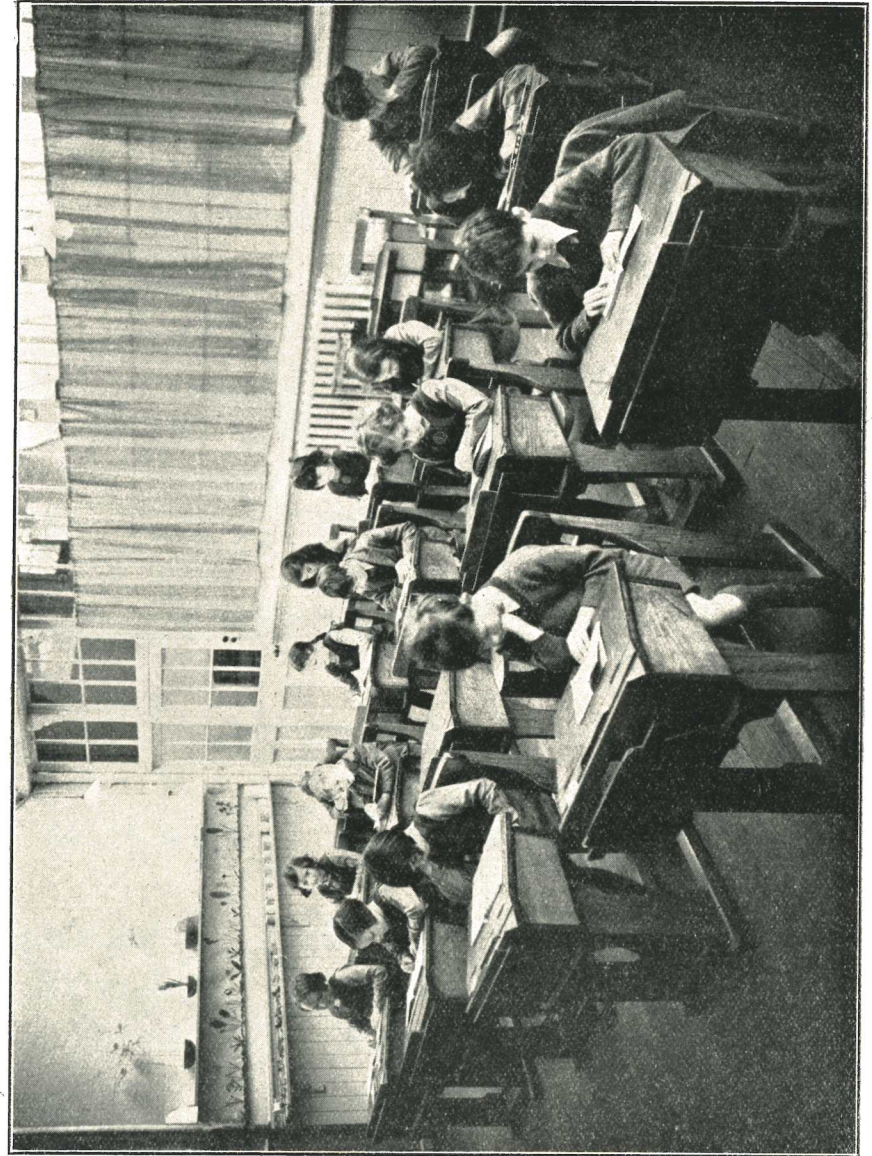
Co-operation between Home and School. The School is anxious to co-operate with parents so that the child's life at home and school may be a unity. A report on the child's progress is sent home at the end of each term and meetings for discussion between Parents and Staff are held from time to time.

Fees. All fees are payable in advance and must be paid before the end of the first week of each term. Children whose fees have not been paid at the end of the first week of a term will not be permitted to continue to attend, nor will they be re-admitted until the fees have been paid.

If it shall appear necessary at any time hereafter to make any alteration in the fees given below, at least one full term's notice will be given of such alteration to the Parent or Guardian of each pupil.

N.B.—The Committee regret that no deduction can be made on account of absence, as the expenses incurred in maintaining the efficiency of the School are not lessened by the temporary absence of individual pupils.

Parents are strongly urged to take advantage of an Insurance Scheme in operation in the School, by means of which they can recover Fees in the event of a child's enforced absence through illness or exposure to infection. Children under the age of five are not admitted to the Scheme.



FORM II

Fees. There is an entrance fee of one guinea.

Inclusive fee for children aged two to seven years : ten guineas. (*This includes dinners four or five times a week according to class.*)

Inclusive fee for children aged two to six who stay at school for mornings only : five guineas.

Inclusive fee for children from the seventh birthday : ten guineas. (*This does not include the cost of mid-day dinner.*)

N.B.—The following deductions from the above fees will be allowed when two or more pupils attend at the same time from the same family : Second pupil, 10s. per term ; third and subsequent pupils, 15s. each per term.

The only possible extras :—

Insurance fee, 7/6 from the age of five years.

School car fares, by arrangement.

Dinner for children over seven years for four days a week, £2 10s. 6d.

Dinner for children over seven years for five days a week, £3 3s.

Piano lessons, £3 13s. 6d.

Boxing lessons, 12s.

Swimming lessons during the Summer Term, 7s. 6d.

Coaching out of school hours, by arrangement.

May, 1937.